

How to Record Video to a Memory Card in your Digital Camcorder and Import the Video into Windows Movie Maker

If your digital camcorder has a memory card, you can record video to the memory card instead of recording it to a mini-dv tape. This will be useful if you want to import your video from your camcorder into Windows Movie Maker in your computer, but your computer doesn't have a Firewire port for importing taped video. A memory card cannot hold as much video as a tape, but it can hold enough for most of your video projects. The video quality will be less than video recorded to tape, but the quality will be good enough to export your finished video to a Windows Media Player file. The quality will **not** be good enough to export your video to a DVD.

The following instructions are for a Canon Elura 100 camcorder, but the same basic principles would apply for any camcorder with a memory card. You will need the following hardware:

- A digital camcorder that can accept a memory card
- A memory card with at least 512 MB of free space
- A card reader
- A PC with Windows Movie Maker

1. Make sure your memory card is inserted in the card slot in the camcorder. The slot is hidden behind a plastic cover labeled **card** next to the lens.



2. Find the **tape/memory card** switch on the back of the camcorder. Push the switch to the right so you have selected **memory card**.



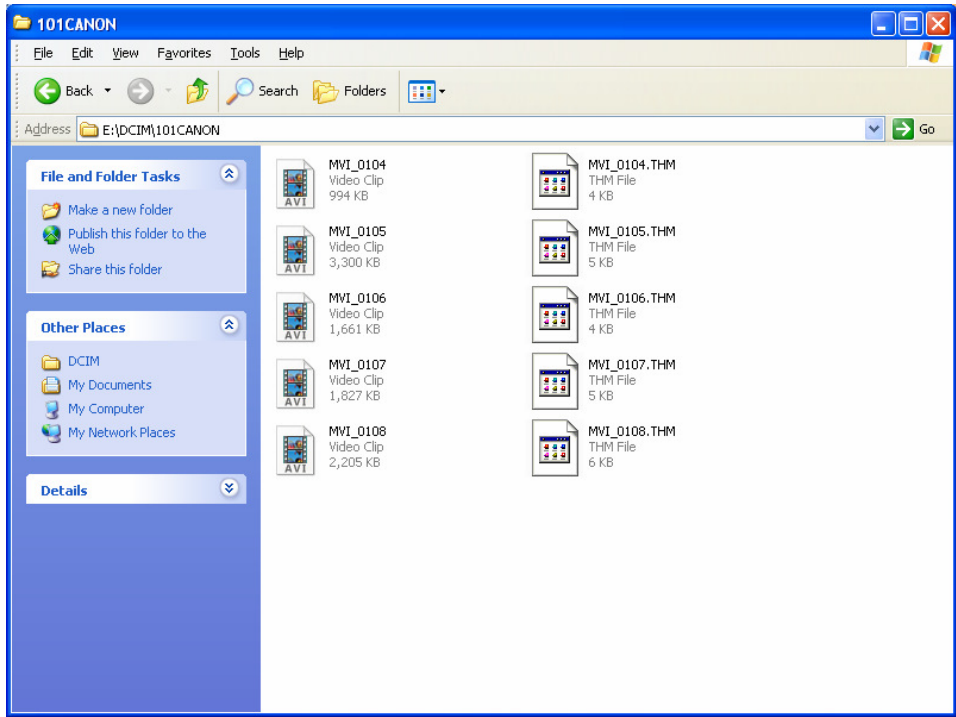
3. Power up the camcorder in the camera mode.

4. Open the lens cover and LCD display.

5. Press the **Function (Func.)** button on the back of the camcorder to open the menu.

6. Press the up toggle until you have selected **Movie Size**. The symbol in the LCD screen will look like a movie camera, probably with the word **Off**.

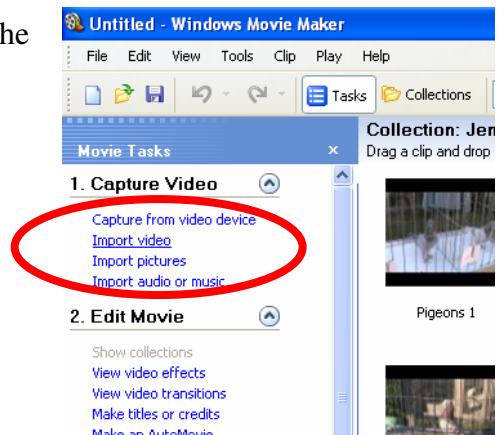
7. Press the right toggle until you select **320 x 240**.
8. Press the Func. button to close the menu.
9. In the upper right corner of the LCD you will see a number and a time (for example, 1362 and 0:33). The number is the number of photos you can take on the memory card. The time is the amount of time **in minutes** (it appears to be seconds, but it's really minutes) that you can record video to the card. An empty 512 MB memory card should be able to record about 30 minutes of video.
10. Shoot the video you want to shoot. Note that while you're recording, you will see two time stamps in the upper right corner of the LCD. The time stamp on the bottom is the number of seconds of the shot you're currently recording. The time stamp on top is the number of minutes of recording time you have left on the memory card.
11. When you're done shooting, power off the camcorder and eject the memory card by opening the card cover and pushing the card in to make it pop out.
12. Create a folder on your desktop to store the video files you're about to transfer from the memory card.
13. Insert the memory card into your card reader and plug the USB cable coming out of the card reader into a USB port on your computer.
14. The **Removable Disk** pane will appear. Click on **Open folder to view files**
15. You will see a folder named **DCIM**. Double click on it.
16. You will see a folder named **XXXCanon** (the Xs will be numbers). Double click on it to open it.
17. You will see a series of video files (**AVI** files) and backup files (**THM** files). The camcorder will have named the files (in this example, **MVI_0104**, **MVI_0105**, etc.) If you wish, you can double click on an AVI file and play it in Windows Media Player. Note that every time you stopped/started recording, you created a new AVI file.



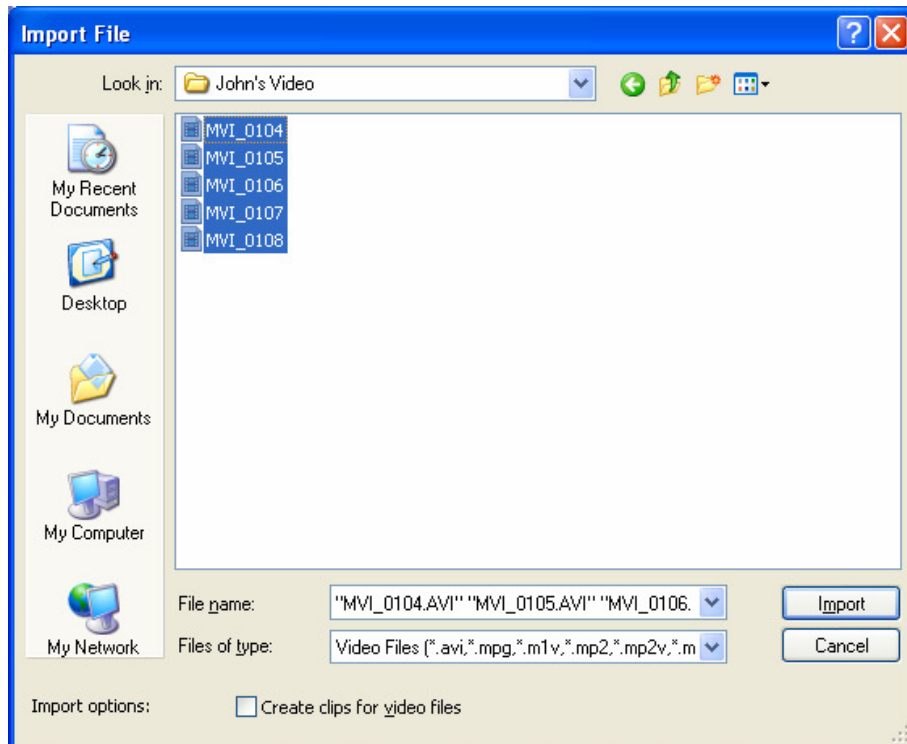
18. Click **Edit/Select All**, then click **Copy** to copy all the files.

19. Paste the files into the folder you created on your desktop.

20. Open Windows Movie Maker. In the Task Pane under **Capture Video**, click **Import Video**.



21. Navigate to the folder on your desktop where you copied and pasted your video files. Point your mouse at a blank area of the folder pane. Click-hold-and-drag to select all the video files. Then click **Import**.



22. Now would be a good time to remove your card reader from your computer, remove your memory card from the card reader, and return your memory card to your camcorder.
23. Now in Movie Maker, click on **View>Collections**.

24. You will see a list of all your video collections. When you record video to a memory card, Movie Maker puts each of those video files in its own collection. In this example, the collections have the same names as the video files themselves (MVI-0104, MVI_0105, etc.)
25. To make your files easier to work with, drag each file into one collection by clicking on a collection and dragging the video file into the collection where you want to store all the files.
26. Once you have dragged all the files into collection, delete the empty collections by right-clicking the empty collection and left-clicking on **Delete**.

